

# Alaska Department of Fish and Game

Habitat Section  
Southeast Region



## 114-34-10100 Tributary 3

## ADDITION

**Water body name:**

**Survey date:** 7/8/2022; 9/26/2023

**Quad:** Juneau A-5

**Species & Lifestage:**

**Upper Reach Latitude:** 58.097610 **Longitude:** -135.590799

**Survey crew:** FC, NJ, CD, RR

**Lower Reach Latitude:** 58.097564 **Longitude:** -135.589588

**Findings:** We surveyed this uncataloged stream using a backpack electrofisher, baited minnow traps, and GPS. We captured juvenile coho salmon, Dolly Varden, and cutthroat trout. The tributary stream flows through a 2 ft wide, perched culvert and into a low-gradient channel dominated by gravel sediment (Table 1; Figures 1–3).

**Recommendations:** Add this uncataloged stream to the anadromous waters catalog for rearing coho salmon (Figure 4).

**Nomination:** Pending

Table 1.—114-34-10100 tributary 3 survey data.

Waypoint	Latitude	Longitude	Notes	Stream Width ft	Stream Substrate	Habitat Features	Gradient %	Sample Effort	Sample Results
914	58.097536	-135.590251		4-6	Small Gravel		1-2	EF	2 CO
915	58.097560	-135.590562		6-8	Small Gravel Large Gravel		2-4	EF	2 CO 1 CT
916	58.097677	-135.590754	Continued CO capture. Gradient increases to 6-8% just upstream and to ~25% near road crossing; resident fish capture upstream.	2-4	Small Gravel		2-4	EF	2 CO 2 CT
958	58.097484	-135.591586	Minnow trap soaked overnight ~20' upstream of culvert inlet. 24" CMP; top slightly smashed; culvert inlet poorly aligned; rust line 6-8" high at inlet.	1-2	Small Gravel Large Gravel		4-6	MT	3 CT
959	58.097592	-135.591272	24" CMP outlet perched 18-24" onto riprap. Minnow trap soaked overnight downstream of headcut ~30' downstream of culvert.					MT	2 DV



Figure 1.—Channel at waypoint 915.



Figure 2.—Juvenile coho salmon captured at waypoint 915.



Figure 3.—Perched culvert outlet at waypoint 959.



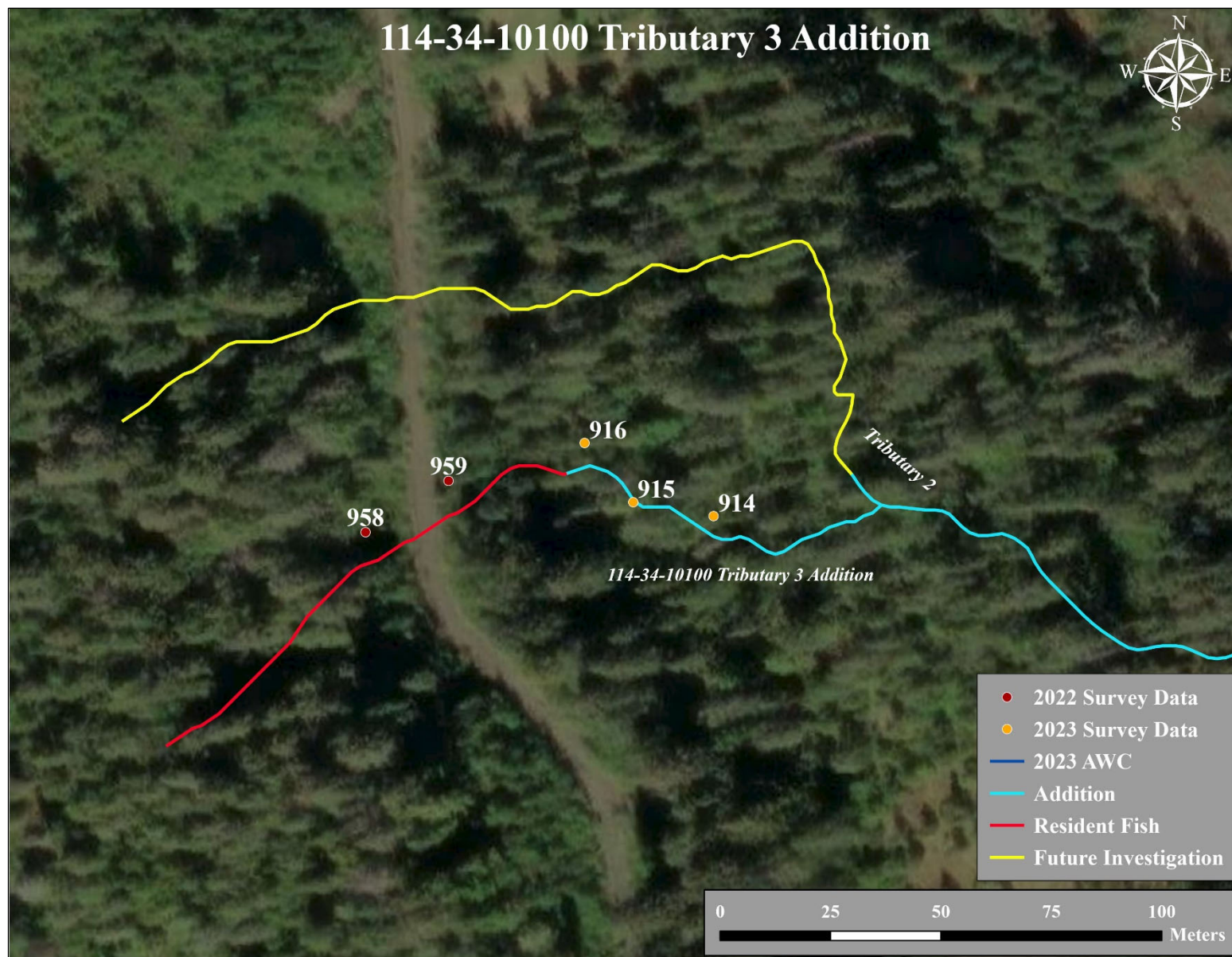


Figure 4.—114-34-10100 tributary 3 addition map.